

ESSEX COUNTY COUNCIL

PUBLIC PATH CREATION ORDER 2023

**UPGRADE OF PART OF FOOTPATH 48 RADWINTER TO A BRIDLEWAY AT
STOCKING GREEN FARM IN RADWINTER**

IN THE DISTRICT OF UTTLESFORD

**HIGHWAYS ACT 1980 - SECTION 26
PUBLIC PATH CREATION ORDER**

**PUBLIC PATH CREATION ORDER
HIGHWAYS ACT 1980 - SECTION 26
ESSEX COUNTY COUNCIL
UPGRADE OF PART OF FOOTPATH 48 RADWINTER TO A BRIDLEWAY
IN THE DISTRICT OF UTTLESFORD**

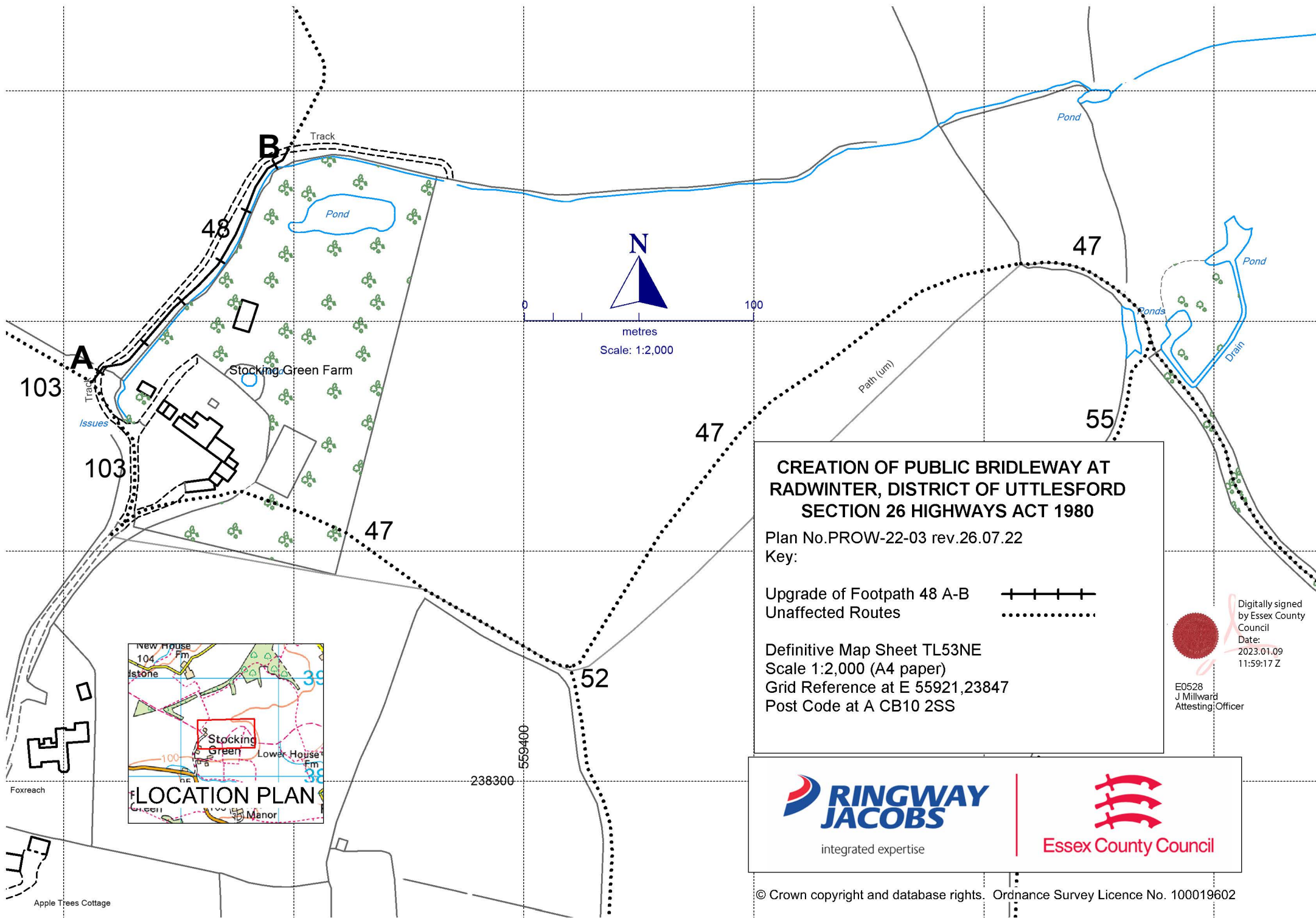
This Order is made by Essex County Council (“the authority”) under section 26 of the Highways Act 1980 (“the 1980 Act”) because it appears to the authority that having regard to the matters set out in section 26 (1) it is expedient that a section of Footpath 48 Radwinter between Bridleway 103 Radwinter and the diverted route of Bridleway 47 Radwinter should be upgraded to a bridleway on the grounds of preserving the bridleway connection between Bridleway 103 Radwinter and the diverted route of Bridleway 47 Radwinter for the convenience of the public.

Uttlesford District Council has been consulted as required by section 26(3) of the 1980 Act.

BY THIS ORDER:

1. There shall be at the end of 28 days from the date of confirmation of this Order a bridleway over the land situated at Stocking Green Farm in Radwinter described in the Schedule and shown by a bold black line with cross bars in the intervals on the Order Map numbered PROW-22-03 rev.26.07.22 contained in this Order.

2. The Council will set out the said bridleway to a standard commensurate with it being a highway maintainable at the public expense within 28 days from the date of this Order. The construction of the bridleway referred to in the Schedule to this order shall include the following:
 - (i) a path of 3 metres in width between points A and B
 - (ii) existing surfaces to be maintained
 - (iii) a waymarker at point B



**CREATION OF PUBLIC BRIDLEWAY AT
RADWINTER, DISTRICT OF UTTLESFORD
SECTION 26 HIGHWAYS ACT 1980**

Plan No. PROW-22-03 rev. 26.07.22

Key:

- Upgrade of Footpath 48 A-B
- Unaffected Routes

Definitive Map Sheet TL53NE
Scale 1:2,000 (A4 paper)
Grid Reference at E 55921, 23847
Post Code at A CB10 2SS

Digitally signed
by Essex County
Council
Date:
2023.01.09
11:59:17 Z

E0528
J Millward
Attesting Officer



SCHEDULE

DESCRIPTION OF SITE OF NEW WAY

A length of public bridleway being 3 metres in width shown by a bold black line with cross bars in the intervals on the Order Map commencing at point **A** at grid reference 55921,23847 where it meets Bridleway 103 Radwinter running in a north easterly direction along a track for a total distance of approximately 135 metres to point **B** at grid reference 55929,23857 where it connects to the diverted route of Bridleway 47 Radwinter and the onward continuation of Footpath 48. The bridleway is an upgrade of part of the existing Footpath 48 Radwinter.

The COMMON SEAL of the ESSEX COUNTY COUNCIL was hereunto affixed on the Ninth day of January 2023

E0528

In the presence of
Jacqueline Millward
Attesting Officer



Digitally
signed by
Essex County
Council

Date:
2023.01.09
12:04:37 Z

Dated: 9th day of January 2023

PUBLIC PATH CREATION ORDER

**Highways Act 1980
Section 26**

Creation of a Bridleway by upgrading
part of the existing Footpath 48
Radwinter in the District of Uttlesford
Linking Bridleway 47 Radwinter with
Bridleway 103 Radwinter.

Paul Turner
Director, Legal & Assurance

Essex Legal Services
Seax House
Victoria Road South
Chelmsford
Essex
CM1 1QH

**HIGHWAYS ACT 1980
SECTION 26**

PUBLIC PATH CREATION ORDER 2023

**UPGRADE OF PART OF FOOTPATH 48 RADWINTER TO A BRIDLEWAY AT
STOCKING GREEN FARM IN RADWINTER**

IN THE DISTRICT OF UTTLESFORD

ESSEX COUNTY COUNCIL in exercise of the powers conferred upon them
in that behalf, hereby confirm the foregoing Order:

THIS ORDER IS HEREBY CONFIRMED AS UNOPPOSED ORDER

The COMMON SEAL of the ESSEX COUNTY COUNCIL was hereunto affixed on
the Second day of November 2023

E0717

in the presence of
Jacqueline Millward
Attesting Officer

Dated: 2nd day of November 2023

CONFIRMATION ORDER

PUBLIC PATH CREATION ORDER

**HIGHWAYS ACT 1980
SECTION 26**

Creation of a Bridleway by upgrading part
of the existing Footpath 48 Radwinter in the
District of Uttlesford.
Linking Bridleway 47 Radwinter with
Bridleway 103 Radwinter

PAUL TURNER
Director, Legal and Assurance

Essex County Council
Seax House
Victoria Road South
Chelmsford
Essex
CM1 1QH