



Get your city ready for the future with DigiStreet

DigiStreet

Developed with the aim of becoming your long-term partner, the system-ready architecture of DigiStreet enables you to enjoy the benefits of connected lighting systems today and also gets the city ready for the innovations to come! Its two sockets enable you to connect directly to the Philips CityTouch system and it is also prepared to connect you to the future innovations of IoT. Next to this, each individual luminaire is uniquely identifiable, thanks to the Philips Service tag application. With a simple scan of a QR code, placed on the inside of the mast door, you gain instant access to the luminaire configuration, making maintenance and programming operations faster and easier, no matter what stage of the luminaire's lifetime. DigiStreet is also equipped with dedicated light recipes that: 1) maintain optimal ecosystems for bats or 2) preserve a dark night sky.

Benefits

- An optimised solution for road and street applications, saving up to 80% energy compared with conventional luminaires
- Easy luminaire identification to make maintenance easier and quicker
- Future-proof upgrade to tele-management and sensors

Features

- System lumen from 1,000 to 24,000 lm Up to 147 lm/W Choice of 21 optics Internal louvre (optional)
- IP66
- IK09
- 10 kV surge protection
- 100,000 hours lifetime @ L90B10
- Philips Service tag

Application

- Traffic routes and main access road
- Urban and residential areas
- City centres and high streets
- Cycle paths, footpaths and pedestrian crossings

Versions

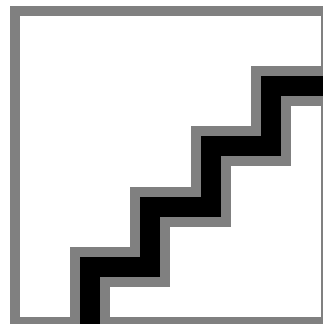
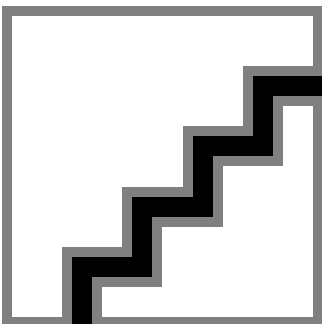
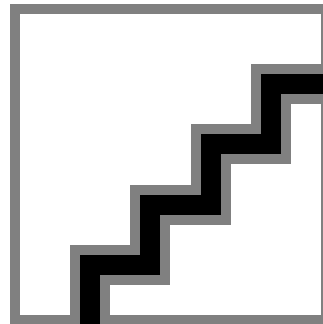
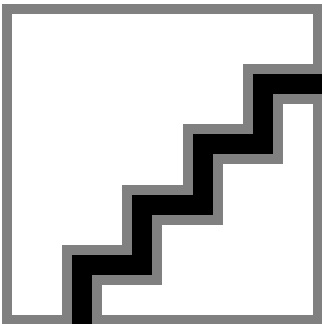


Digistreet-BGP763-DP04



Digistreet-BGP761-DP07

Dimensional drawing



Product details

Digistreet-BGP760-DP06.tif



Digistreet-BGP760-DP09.tif



Digistreet-BGP760-DP10.tif



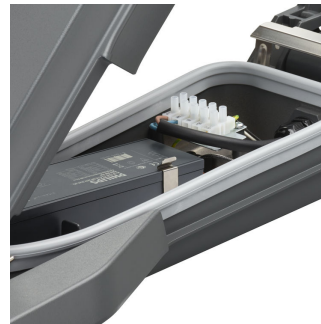
Digistreet-BGP760-DP11.tif



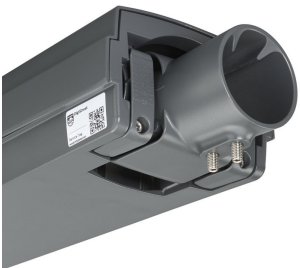
Digistreet-BGP761-DP17.tif



Digistreet-BGP761-DP18.tif



Digistreet-BGP761-DP19.tif



Digistreet-BGP761-DP20.tif



Product details



Digistreet-BGP761-DP21.tif



Digistreet-BGP761-DP22.tif



Digistreet-BGP761-DP23.tif



Digistreet-BGP761-DP24.tif



Digistreet-BGP761-DP25.tif



Digistreet-BGP761-DP26.tif

General information	
Driver included	Yes
Light source replaceable	Yes
Light technical	
Light source colour	740 neutral white
Optical cover/lens type	Flat glass
Standard tilt angle side entry	0°
Standard tilt angle post-top	0°
Upwards light output ratio	0
Controls and dimming	
Dimmable	Yes
Approval and application	
CE mark	Yes
Flammability mark	-
Mech. impact protection code	IK09
Surge Protection (Common/Differential)	Luminaire surge protection level up to 6 kV differential mode and 8 kV common mode
Initial performance (IEC compliant)	
Init. Corr. Colour Temperature	4000 K
Application conditions	
Maximum dim level	Not applicable

General information

Order Code	Full Product Name	Lamp family	Gear code	Number of gear units	Product family code
37828100	BGP762 LED129-/740 I DM11 DGR 32-48	-	LED129	Unit	BGP762
37832800	BGP762 LED169-/740 I DS50 DGR 62	-	LED169	Unit	BGP762
37826700	BGP762 LED110-/740 I DN10 DGR 32-48	-	LED110	Unit	BGP762
37830400	BGP762 LED149-/740 I DM50 DGR 32-48	-	LED149	Unit	BGP762
37834200	BGP762 LED180-/740 I DX10 DGR 32-48	-	LED180	Unit	BGP762
37836600	BGP762 LED200-/740 I DW50 DGR 62	-	LED200	Unit	BGP762
37679900	BGP760 LED10-/740 I DM10 DGR 32-48	EB	LED10	Unit	BGP760
37681200	BGP760 LED14-/740 I DN10 DGR 32-48	EB	LED14	Unit	BGP760
37687400	BGP760 LED27-/740 I DS50 DGR 32-48	EB	LED27	Unit	BGP760
37689800	BGP760 LED34-/740 I DX10 DGR 32-48	EB	LED34	Unit	BGP760
37691100	BGP760 LED44-/740 I DW50 DGR 32-48	EB	LED44	Unit	BGP760
37842700	BGP763 LED300-/740 I DW50 DGR 62	-	LED300	2 units	BGP763
37840300	BGP763 LED260-/740 I DX10 DGR 32-48	-	LED260	2 units	BGP763
37693500	BGP761 LED45-/740 I DM10 DGR 32-48	-	LED45	Unit	BGP761
37699700	BGP761 LED74-/740 I DM50 DGR 32-48	-	LED74	Unit	BGP761
37703100	BGP761 LED94-/740 I DX10 DGR 32-48	-	LED94	Unit	BGP761
37695900	BGP761 LED55-/740 I DN10 DGR 32-48	-	LED55	Unit	BGP761
37701700	BGP761 LED84-/740 I DS50 DGR 32-48	-	LED84	Unit	BGP761

Light technical

Order Code	Full Product Name	Luminaire light beam spread	Optic type outdoor
37828100	BGP762 LED129-/740 I DM11 DGR 32-48	160° - 42° x 54°	Distribution medium 11
37832800	BGP762 LED169-/740 I DS50 DGR 62	32° x 29°	Distribution symmetrical 50
37826700	BGP762 LED110-/740 I DN10 DGR 32-48	68° x 158°	Distribution narrow 10
37830400	BGP762 LED149-/740 I DM50 DGR 32-48	154° - 31° x 54°	Distribution medium 50
37834200	BGP762 LED180-/740 I DX10 DGR 32-48	150° - 43° x 67°	Distribution extra-wide 10
37836600	BGP762 LED200-/740 I DW50 DGR 62	152° - 24° x 66°	Distribution wide 50
37679900	BGP760 LED10-/740 I DM10 DGR 32-48	157° - 33° x 55°	Distribution medium 10
37681200	BGP760 LED14-/740 I DN10 DGR 32-48	68° x 157°	Distribution narrow 10
37687400	BGP760 LED27-/740 I DS50 DGR 32-48	32° x 29°	Distribution symmetrical 50

Order Code	Full Product Name	Luminaire light beam spread	Optic type outdoor
37689800	BGP760 LED34-/740 I DX10 DGR 32-48	150° - 43° x 67°	Distribution extra-wide 10
37691100	BGP760 LED44-/740 I DW50 DGR 32-48	152° - 24° x 66°	Distribution wide 50
37842700	BGP763 LED300-/740 I DW50 DGR 62	152° - 24° x 66°	Distribution wide 50
37840300	BGP763 LED260-/740 I DX10 DGR 32-48	150° - 43° x 67°	Distribution extra-wide 10
37693500	BGP761 LED45-/740 I DM10 DGR 32-48	157° - 33° x 55°	Distribution medium 10
37699700	BGP761 LED74-/740 I DM50 DGR 32-48	154° - 31° x 54°	Distribution medium 50
37703100	BGP761 LED94-/740 I DX10 DGR 32-48	150° - 43° x 67°	Distribution extra-wide 10
37695900	BGP761 LED55-/740 I DN10 DGR 32-48	68° x 157°	Distribution narrow 10
37701700	BGP761 LED84-/740 I DS50 DGR 32-48	32° x 29°	Distribution symmetrical 50

Approval and application

Order Code	Full Product Name	Glow-wire test
37828100	BGP762 LED129-/740 I DM11 DGR 32-48	-
37832800	BGP762 LED169-/740 I DS50 DGR 62	-
37826700	BGP762 LED110-/740 I DN10 DGR 32-48	-
37830400	BGP762 LED149-/740 I DM50 DGR 32-48	-
37834200	BGP762 LED180-/740 I DX10 DGR 32-48	-
37836600	BGP762 LED200-/740 I DW50 DGR 62	-
37679900	BGP760 LED10-/740 I DM10 DGR 32-48	Temperature 650 °C, duration 5 s
37681200	BGP760 LED14-/740 I DN10 DGR 32-48	Temperature 650 °C, duration 5 s
37687400	BGP760 LED27-/740 I DS50 DGR 32-48	Temperature 650 °C, duration 5 s

Order Code	Full Product Name	Glow-wire test
37689800	BGP760 LED34-/740 I DX10 DGR 32-48	Temperature 650 °C, duration 5 s
37691100	BGP760 LED44-/740 I DW50 DGR 32-48	Temperature 650 °C, duration 5 s
37842700	BGP763 LED300-/740 I DW50 DGR 62	-
37840300	BGP763 LED260-/740 I DX10 DGR 32-48	-
37693500	BGP761 LED45-/740 I DM10 DGR 32-48	-
37699700	BGP761 LED74-/740 I DM50 DGR 32-48	-
37703100	BGP761 LED94-/740 I DX10 DGR 32-48	-
37695900	BGP761 LED55-/740 I DN10 DGR 32-48	-
37701700	BGP761 LED84-/740 I DS50 DGR 32-48	-

