

ESSEX COUNTY COUNCIL

RAIL CROSSING EXTINGUISHMENT ORDER 2022

BRIDLEWAY 23 BOREHAM

IN THE CITY OF CHELMSFORD

HIGHWAYS ACT 1980 - SECTION 118A

RAIL CROSSING EXTINGUISHMENT ORDER

RAIL CROSSING EXTINGUISHMENT ORDER
HIGHWAYS ACT 1980 – SECTION 118A
ESSEX COUNTY COUNCIL
BRIDLEWAY 23 BOREHAM

This Order is made by Essex County Council (“the authority”) under section 118A of the Highways Act 1980 (“the 1980 Act”).

The bridleway in the authority’s area described below crosses a railway otherwise than by a tunnel or bridge.

It appears to the authority that it is expedient in the interests of safety of members of the public using, or likely to use, the said bridleway that it should be stopped up.



Chelmsford City Council has been consulted as required by section 120(2) of the 1980 Act.

The operator of the railway Network Rail will erect and maintain barriers and signs at the crossing site.

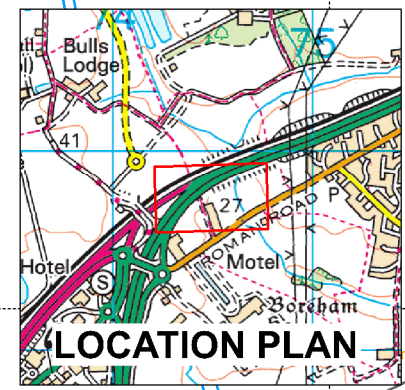
THIS ORDER EXTINGUISHES the public right of way over the land situated north of the A12 dual carriageway known as Bridleway 23 Boreham in the City of Chelmsford and shown by a continuous bold line on the order map numbered PROW-22-18 rev.27.06.22 attached to this Order and described in the Schedule after 14 days from the date of confirmation of this Order but Essex & Suffolk Water shall have the following rights over the land affected by this order namely: the right, notwithstanding their rights under Paragraph 4, Schedule 12, Part II of the Highways Act 1980, of access along the current route of Bridleway 23 Boreham (subject to prior arrangement with and supervision by the railway operator).

**EXTINGUISHMENT OF PART OF BRIDLEWAY 23 BOREHAM
SECTION 118A HIGHWAYS ACT 1980
CITY OF CHELMSFORD**

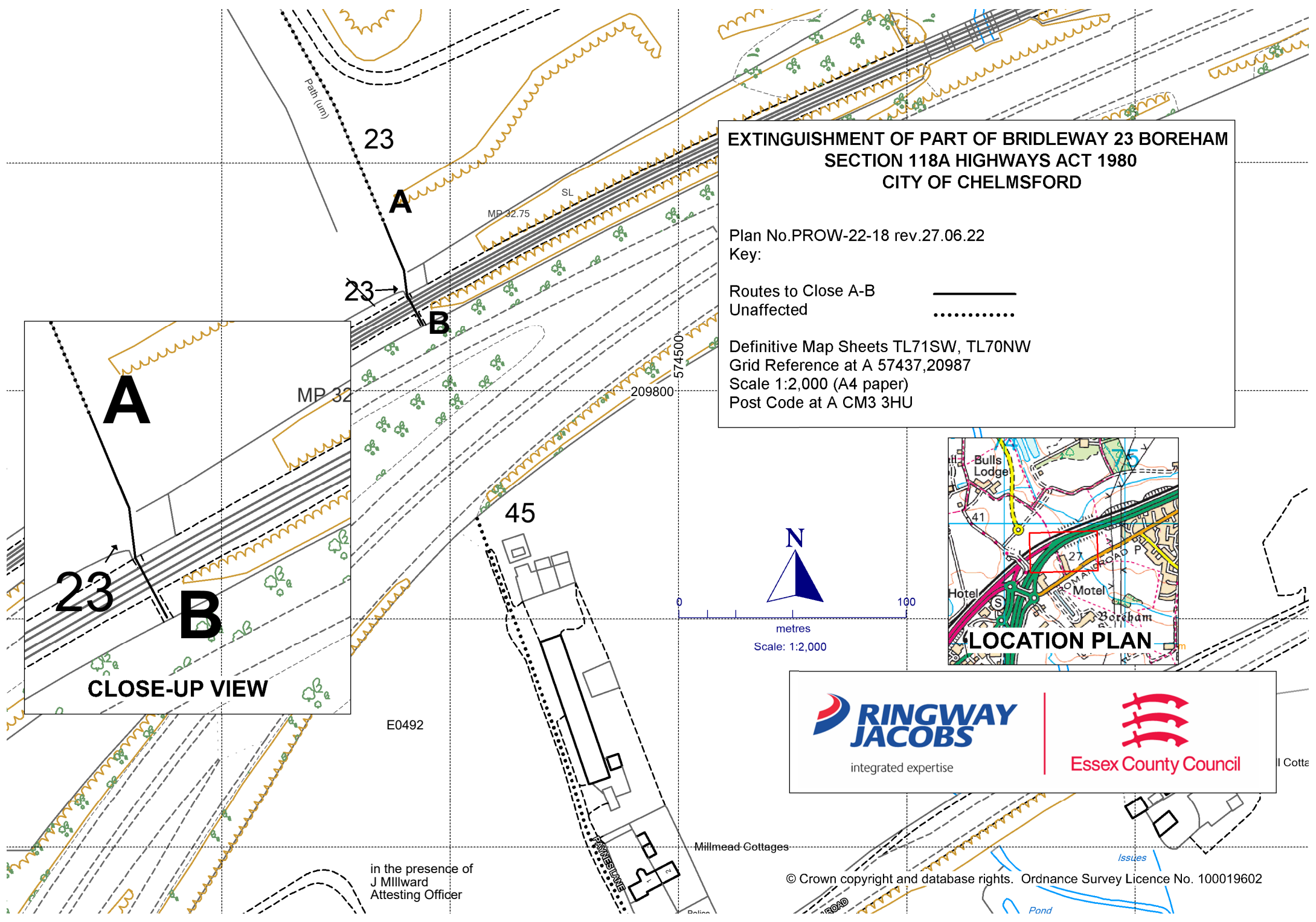
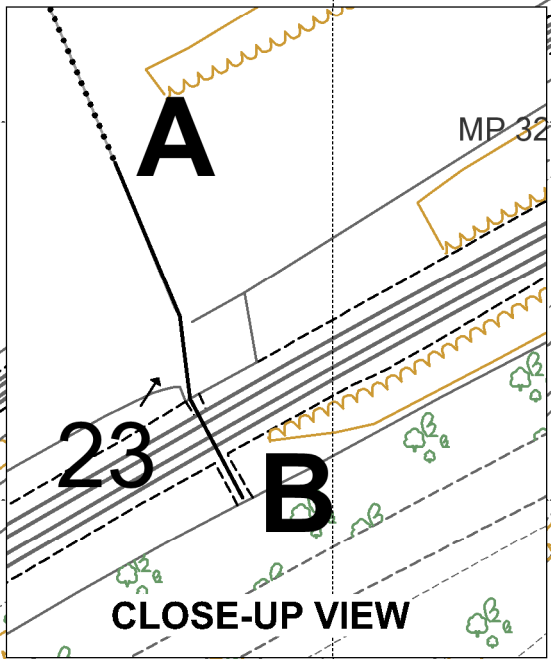
Plan No. PROW-22-18 rev. 27.06.22
Key:

Routes to Close A-B 
Unaffected 

Definitive Map Sheets TL71SW, TL70NW
Grid Reference at A 57437, 20987
Scale 1:2,000 (A4 paper)
Post Code at A CM3 3HU



metres
Scale: 1:2,000



in the presence of
J Millward
Attesting Officer

RINGWAY JACOBS
integrated expertise

Essex County Council

SCHEDULE

A part length of Bridleway 23 Boreham of unknown width shown by a bold continuous line on the order map commencing from point **A** at grid reference 57437,20987 on the northern side of a belt of trees north of the railway line running in a south south easterly direction through the trees and across the railway line for a total distance of approximately 48 metres to point **B** at grid reference 57439,20983 where it terminates at the junction with the A12 road.

The COMMON SEAL of the ESSEX COUNTY COUNCIL was hereunto affixed on the Twenty Seventh day of October 2022

E0492

In the presence of
Jacqueline Millward
Attesting Officer

Dated: 27th day of October 2022

RAIL CROSSING EXTINGUISHMENT ORDER

**HIGHWAYS ACT 1980
SECTION 118A**

Bridleway 23 in the parish of Boreham in the
City of Chelmsford

Paul Turner
Director, Legal and Assurance

Seax House
Victoria Road South
Chelmsford
Essex
CM1 1QH