

ESSEX COUNTY COUNCIL

PUBLIC PATH DIVERSION ORDER 2024

FOOTPATHS 36 AND 40 ROCHFORD

IN THE DISTRICT OF ROCHFORD

HIGHWAYS ACT 1980 - SECTION 119

PUBLIC PATH DIVERSION ORDER

ESSEX COUNTY COUNCIL
HIGHWAYS ACT 1980 – SECTION 119
PUBLIC PATH DIVERSION ORDER
FOOTPATHS 36 AND 40 ROCHFORD

This Order is made by Essex County Council (“the authority”) under section 119 of the Highways Act 1980 (“the 1980 Act”) because it appears to the authority that in the interest of the owners of the land crossed by the footpaths described in paragraph 1 of this order it is expedient that the lines of the paths should be diverted.

The Applicant has agreed to defray any compensation which becomes payable in consequence of the coming into force of this order and any expenses incurred in the order making and bringing the new site of the paths into a fit condition for use by the public.

Rochford District Council have been consulted as required by section 120(2) of the 1980 Act.

BY THIS ORDER:

- 1) The public rights of way over the land situated east of Cherry Orchard Way in Rochford known as Footpaths 36 and 40 Rochford in the District of Rochford and shown by bold continuous lines on the order map numbered PROW-24-05 rev.15.03.24 contained in this order and described in Part 1 of the Schedule to this order shall be stopped up after 35 days from the date of confirmation of this order.

- 2) There shall at the end of 28 days from the date of confirmation of this order be public footpaths over land situated east of Cherry Orchard Way in Rochford known as Footpaths 36 and 40 Rochford in the District of Rochford as described in Part 2 of the Schedule and shown by bold broken lines on the order map numbered PROW-24-05 rev.15.03.24 contained in this order.

DIVERSION OF FOOTPATHS 36 & 40 ROCHFORD
DISTRICT OF ROCHFORD
SECTION 119 HIGHWAYS ACT 1980

PROW-24-05 REV.15.03.24
KEY:

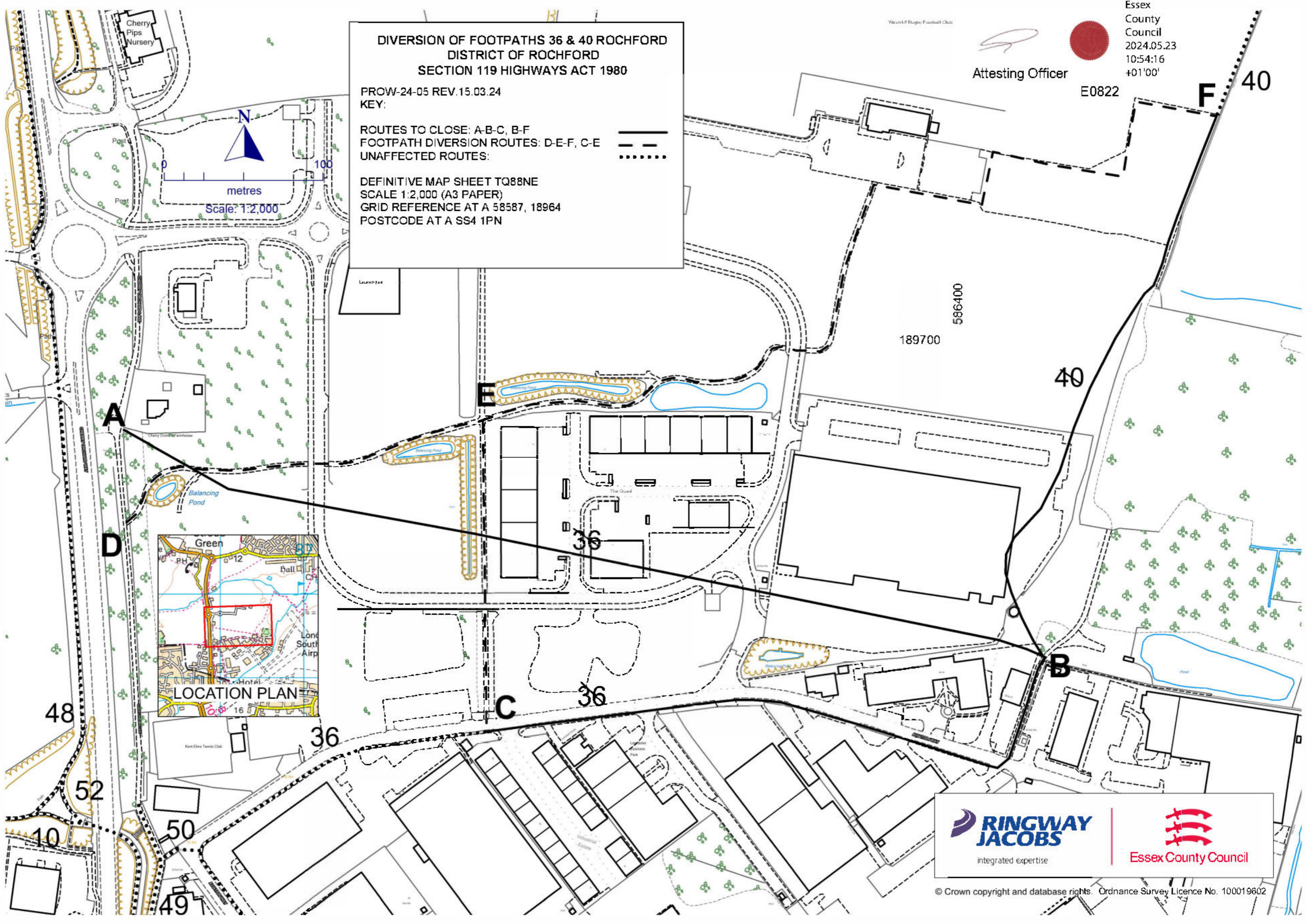
ROUTES TO CLOSE: A-B-C, B-F
FOOTPATH DIVERSION ROUTES: D-E-F, C-E
UNAFFECTED ROUTES:



DEFINITIVE MAP SHEET TQ88NE
SCALE 1:2,000 (A3 PAPER)
GRID REFERENCE AT A 58587, 18964
POSTCODE AT A SS4 1PN

Essex
County
Council
2024.05.23
10:54:16
+01'00'

Attesting Officer
E0822



SCHEDULE

(PART 1)

DESCRIPTION OF SITE OF EXISTING PATHS OR WAYS

Footpath 36 Rochford

(i) A-B-C

A part length of Footpath 36 Rochford of unknown width shown by a bold continuous line on the order map commencing from the public highway known as Cherry Orchard Lane at point **A** at grid reference 58587,18964 running in an east south easterly direction across access roads buildings and parking areas for a distance of approximately 599 metres to point **B** at grid reference 58645,18950 at a point between business units then continues in first a south south westerly direction between business units and then a westerly direction alongside Aviation Way for a final distance of approximately 405 metres to point **C** at grid reference 58610,18945 at the connection point to the proposed newly diverted footpath where it continues unaffected.

Footpath 40 Rochford

(ii) B-F

A part length of Footpath 40 Rochford of unknown width shown by a bold continuous line on the order map commencing from the aforementioned point **B** at its junction with Footpath 36 Rochford running in a generally northerly direction across buildings and parking areas and alongside fields for a total distance of approximately 377 metres to point **F** at grid reference 58656,18984 where it continues unaffected.

(PART 2)
DESCRIPTION OF SITE OF NEW PATHS OR WAYS

(i) D-E-F

A footpath being 2 metres in width shown by a bold broken line on the order map commencing at point **D** at grid reference 58587,18958 where it connects to Cherry Orchard Lane approximately 58 metres south of the current connection point running in an east north easterly direction along a surfaced path for a distance of approximately 244 metres to point **E** at grid reference 58610,18964 then continuing in a generally north easterly direction along surfaced paths around parking areas and around a field edge for a final distance of approximately 626 metres to the aforementioned point **F** where it continues unaffected.

(ii) C-E

A footpath being 2 metres in width shown by a bold broken line on the order map commencing at the aforementioned point **C** running in a northerly direction along a surfaced path for a total distance of approximately 196 metres where it meets the proposed newly diverted footpath at the aforementioned point **E**.

The Common Seal of Essex County Council was hereunto affixed on the twenty third day of May 2024.



in the presence of

A handwritten signature in red ink, appearing to read 'Michelle Nicoll'.

Michelle Nicoll
Attesting Officer

Essex County Council
2024.05.23 10:54:52
+01'00'

E0822

Dated: 23rd day of May 2024

PUBLIC PATH DIVERSION ORDER

**HIGHWAYS ACT 1980
SECTION 119**

Footpaths 36 and 40 in the parish of Rochford
in the District of Rochford

Paul Turner
Director, Legal and Assurance

Seax House
Victoria Road South
Chelmsford
Essex
CM1 1QH

**HIGHWAYS ACT 1980
SECTION 119**

**PUBLIC PATH DIVERSION ORDER 2024
FOOTPATHS 36 AND 40 ROCHFORD
IN THE DISTRICT OF ROCHFORD**

ESSEX COUNTY COUNCIL in exercise of the powers conferred upon them in that behalf, hereby confirm the foregoing Order:

THIS ORDER IS HEREBY CONFIRMED AS UNOPPOSED ORDER

The COMMON SEAL of the ESSEX COUNTY COUNCIL was hereunto affixed on the Seventh day of November 2024

in the presence of



Michelle Nicoll
Attesting Officer

E0960

Dated: 7th November 2024

CONFIRMATION ORDER

PUBLIC PATH DIVERSION ORDER

HIGHWAYS ACT 1980 SECTION 119

Footpaths 36 and 40 Rochford in the
District of Rochford

PAUL TURNER
Director, Legal and Assurance

Essex County Council
Seax House
Victoria Road South
Chelmsford
Essex
CM1 1QH