

ESSEX COUNTY COUNCIL

PUBLIC PATH DIVERSION ORDER 2024

FOOTPATH 65 SIBLE HEDINGHAM

IN THE DISTRICT OF BRAINTREE

HIGHWAYS ACT 1980 - SECTION 119

PUBLIC PATH DIVERSION ORDER

ESSEX COUNTY COUNCIL
HIGHWAYS ACT 1980 – SECTION 119
PUBLIC PATH DIVERSION ORDER
FOOTPATH 65 SIBLE HEDINGHAM

This Order is made by Essex County Council (“the authority”) under section 119 of the Highways Act 1980 (“the 1980 Act”) because it appears to the authority that in the interest of the owners of the land crossed by the footpath described in paragraph 1 of this order it is expedient that the line of the path should be diverted.

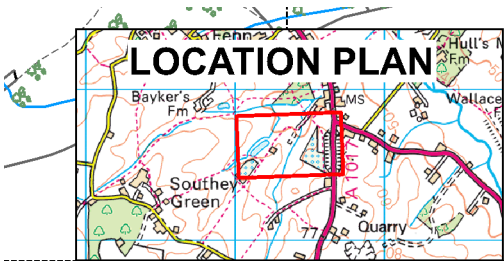
The landowners have agreed to defray any compensation which becomes payable in consequence of the coming into force of this order and any expenses incurred in the order making and bringing the new site of the path into a fit condition for use by the public.

Epping Forest District Council have been consulted as required by section 120(2) of the 1980 Act.

BY THIS ORDER:

- 1) The public right of way over the land south of Brickwall Farm known as Footpath 65 Sible Hedingham in the District of Braintree and shown by a bold continuous line on the order map numbered PROW-23-24 contained in this order and described in Part 1 of the Schedule to this order shall be stopped up after 35 days from the date of confirmation of this order.

- 2) There shall at the end of 28 days from the date of confirmation of this order be a public footpath over the land south of Brickwall Farm known as Footpath 65 Sible Hedingham in the District of Braintree as described in Part 2 of the Schedule and shown by a bold broken line on the order map numbered PROW-23-24 contained in this order.

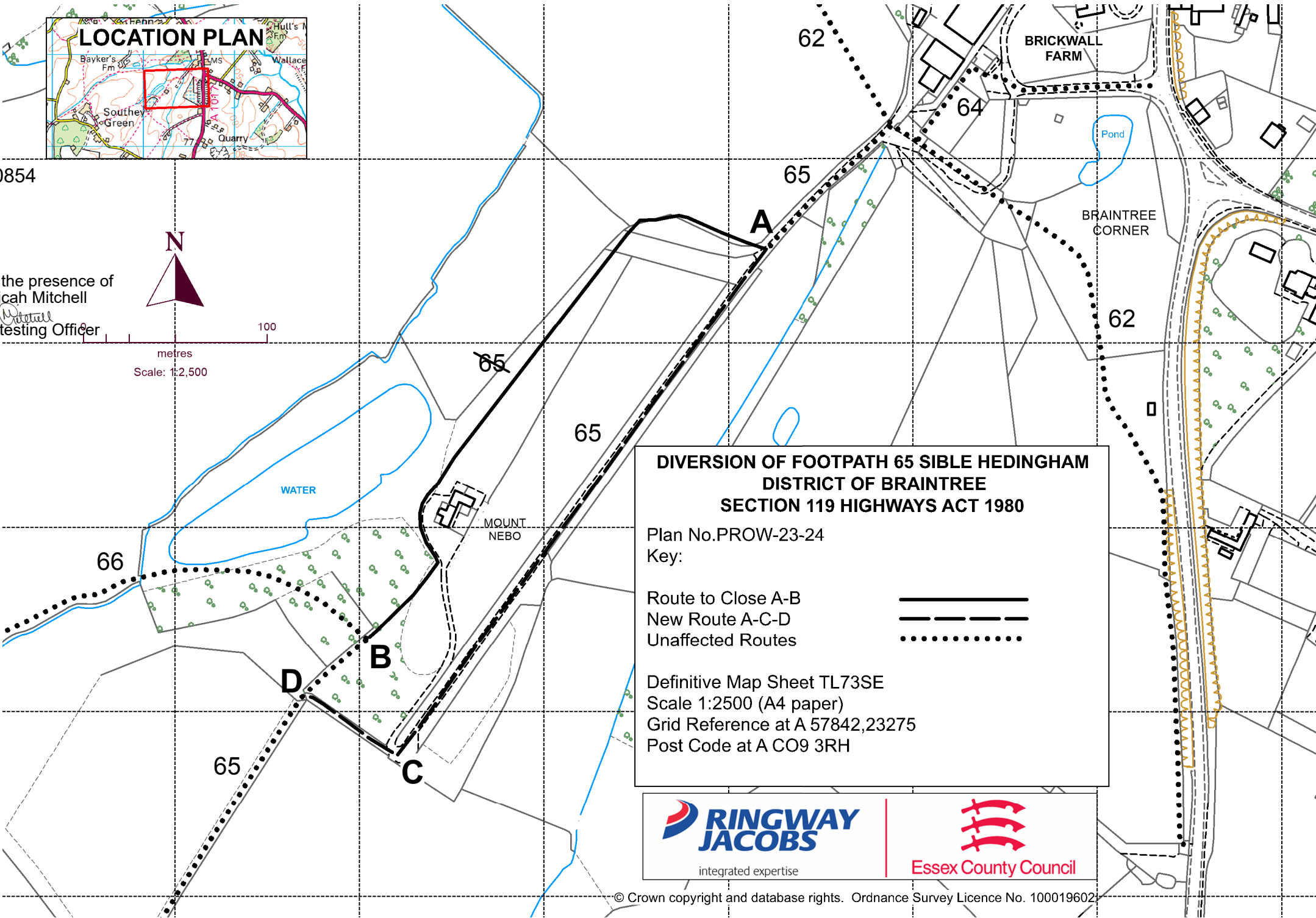


E0854

in the presence of
Micah Mitchell
Micah Mitchell
Attesting Officer






metres
Scale: 1:2,500



**DIVERSION OF FOOTPATH 65 SIBLE HEDINGHAM
DISTRICT OF BRAintree
SECTION 119 HIGHWAYS ACT 1980**

Plan No. PROW-23-24
Key:

Route to Close A-B 
 New Route A-C-D 
 Unaffected Routes 

Definitive Map Sheet TL73SE
 Scale 1:2500 (A4 paper)
 Grid Reference at A 57842,23275
 Post Code at A CO9 3RH



SCHEDULE

(PART 1)

DESCRIPTION OF SITE OF EXISTING PATH OR WAY

A part length of Footpath 65 Sible Hedingham of unknown width shown by a bold continuous line on the order map commencing from point **A** at grid reference 57842,23275 in a north westerly direction through a gate into a paddock then in a generally south westerly direction through another gate and along a tree lined path with a natural surface then continuing to follow the western boundary of the property known as Mount Nesbo for a total distance of approximately 356 metres to point **B** at grid reference 57820, 23253 where it continues unaffected.

(PART 2)

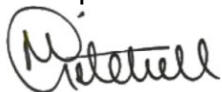
DESCRIPTION OF SITE OF NEW PATH OR WAY

A footpath being 2 metres in width shown by a bold broken line on the order map commencing at the aforementioned point **A** in a south westerly direction along a private access road for a distance of approximately 339 metres to point **C** at grid reference 57822,23247 then continuing in a north westerly direction along a natural surfaced path for a final distance of approximately 60 metres to point **D** at grid reference 57816,23250 where it continues unaffected.

The Common Seal of Essex County Council was hereunto affixed on the ninth
day of July 2024

E0854

in the presence of



Micah Mitchell
Attesting Officer

Dated: 9th day of July 2024

PUBLIC PATH DIVERSION ORDER

**HIGHWAYS ACT 1980
SECTION 119**

Footpath 65 Sible Hedingham in the
District of Braintree

Paul Turner
Director, Legal and Assurance

Seax House
Victoria Road South
Chelmsford
Essex
CM1 1QH