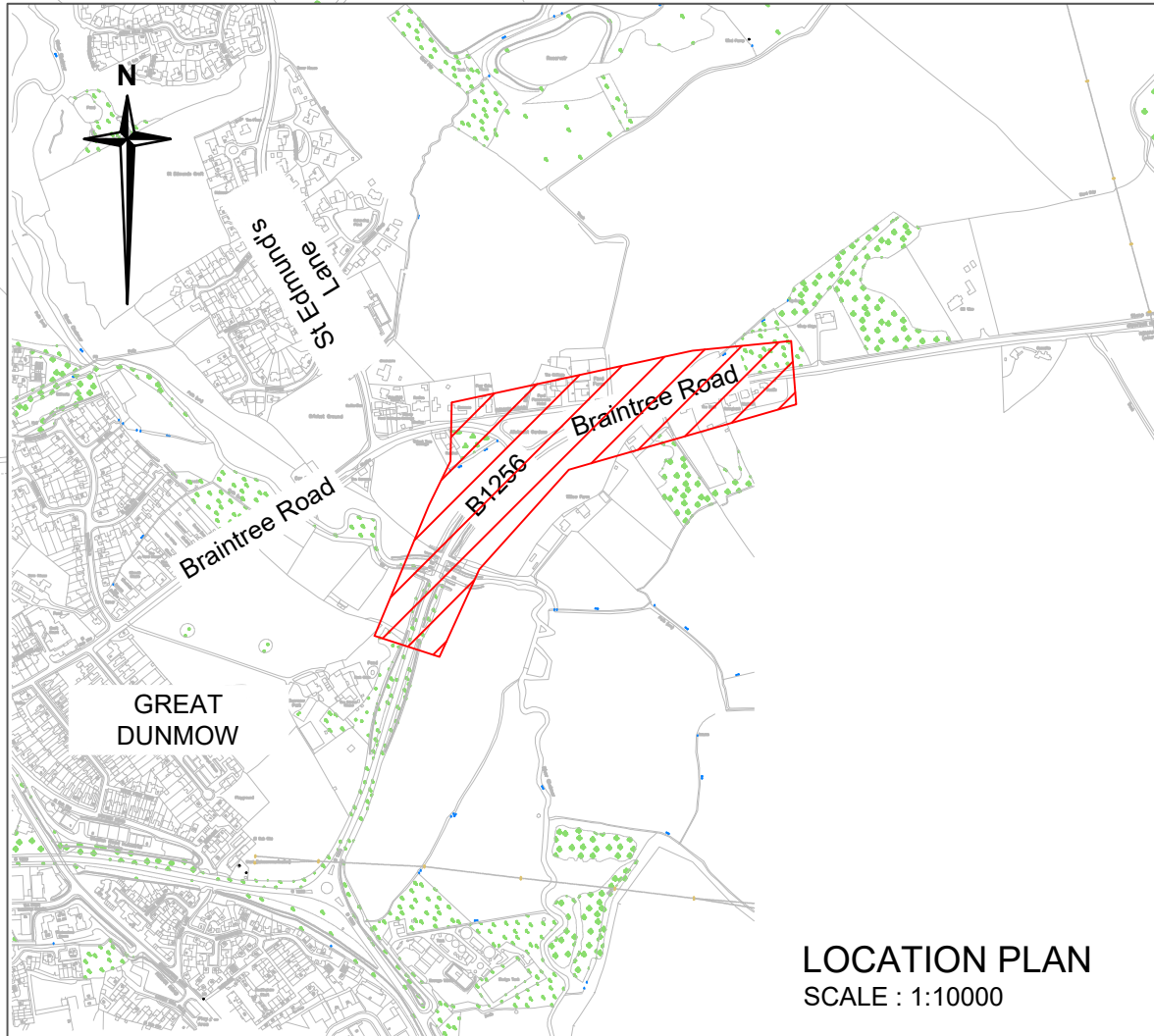


GENERAL ARRANGEMENT
SCALE : 1:500





LOCATION PLAN
SCALE : 1:10000

NOTES

1. Do not scale from drawing.

Key

-  Proposed speed limit reduction from 60mph to 40mph
-  Area on interest

Rev.	Date	Description of revision	Drawn	Checked	Reviewed	Approved

DRAWING STATUS
FOR CONSULTATION



Essex Highways, Seax House, Victoria Road South, Chelmsford, CM1 1QH.
Tel: 0345 6037631 © Essex County Council

SCHEME TITLE
**UTTLESFORD CR
B1256 BRAINTREE ROAD
GT DUNMOW**

DRAWING TITLE
SLO DRAWING

DESIGNED	DRAWN	CHECKED	REVIEWED	APPROVED
MJW	MJW	SLS	MJW	CB

DATE	DATE	DATE	DATE	DATE
NOV 24	NOV 24	NOV 24	NOV 24	NOV 24

DRAWING UNITS U.N.O.
DIMENSIONS IN MILLIMETRES
LEVELS IN METRES
SCALE AT A3 (420x297mm)
NTS

DRAWING No. **16243211172300001-100-001** REV. **-**

This map is reproduced from Ordnance Survey material with the permission of Ordnance Survey on behalf of the Controller of His Majesty's Stationery Office © Crown Copyright. Unauthorised reproduction infringes Crown Copyright and may lead to prosecution or civil proceedings. Essex County Council, AC0000623866, 2024.

