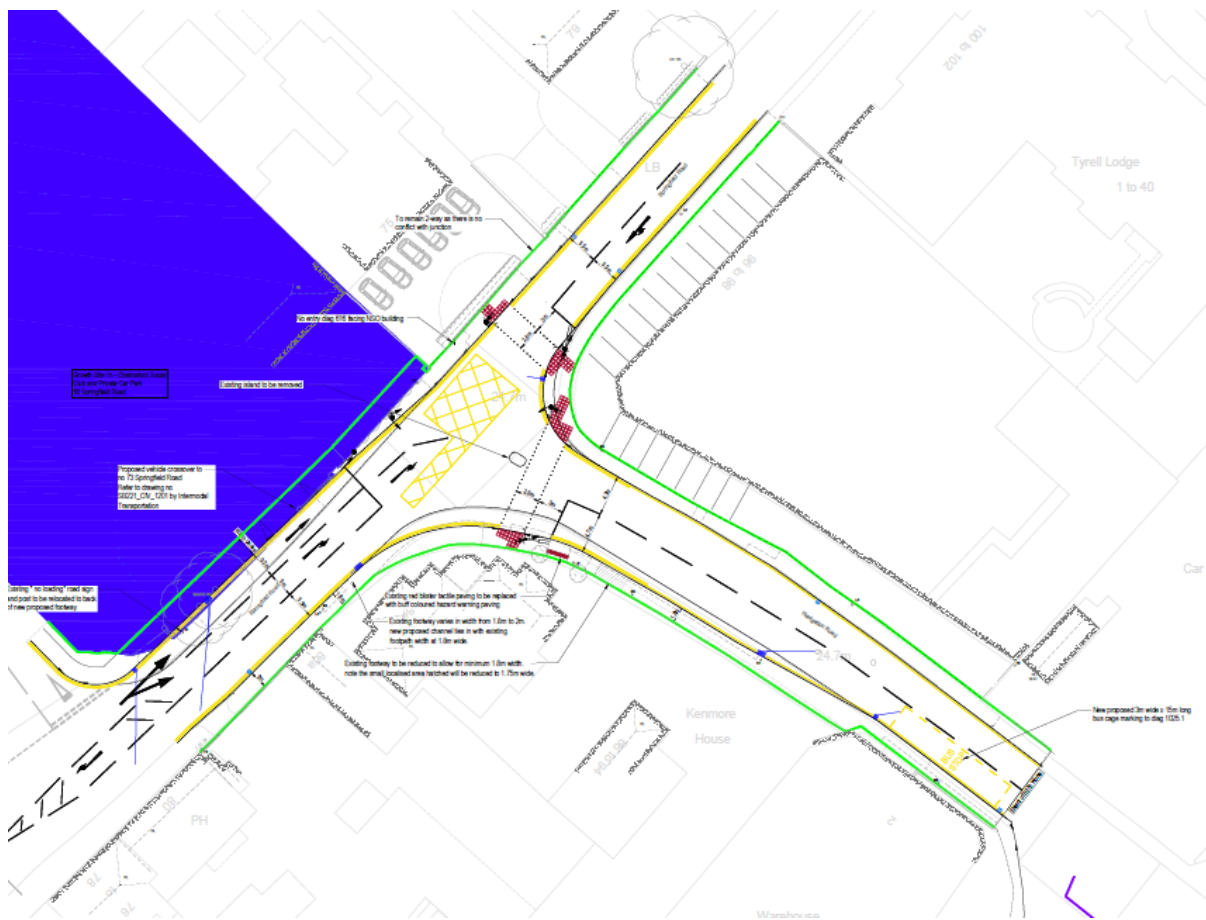


Dear Resident/Business,

Further to our previous letter regarding the highway improvements to the Springfield Road/Navigation Road Junction, we are writing to provide yourselves with an update with respect to the programme and traffic management for the scheme illustrated below;



The northbound road closure on Springfield Road will now be in place until the 30th of June 2024. This is due to factors outside of our control. The signage on site has been updated to reflect this.

From the 17th to the 21st June and also on the 24th June, Springfield Road will be closed in both directions at the point of the works between the hours of 8pm-6am along with a closure of Navigation Road between the junction of Springfield Road and Wharf Road. This is necessary for the full resurfacing works to take place. All road closures will be installed with full diversion signage for the alternative routes. During the road closure the only access available will be to emergency vehicles and for pedestrians on the footways.

If you have any queries relating to our plans please contact us directly. You can also view this information on the Essex Highways website which is accessible by visiting:

<https://www.essexhighways.org/springfield-road-navigation-road-chelmsford-junction-improvements>.

We will endeavour to keep disturbance to a minimum, however, We apologise in advance for any inconvenience that may be caused.

Yours Faithfully



Stefan Ambrose

Engineering Manager

MDS Civil Engineering Ltd

01787 471092

stefan@mds.uk.com

Managing Director: D.Chaston **Directors:** R.Pullen BEng (Hons) M.Pratt BSc FCA
Company Registration No.: 04000753 **VAT Registration No.:** GB 135 5594 00

