

**Notes**

- All traffic management in accordance with Chapter 8, the Traffic Signs Manual 2009 and Safety at Street Works and Road Works 2013.
- Sign locations on this drawing are approximate, final sign locations to be agreed on site.

**SAFETY ZONE DIMENSIONS**  
 Permanent speed limit 50mph  
 Sideways safety zone 1.2m  
 Longways safety zone 30m  
 (Dimensions are minimal)

**WORKS ACCESS** **WORKS EXIT**  
 Works access location to be agreed on site at initial site meeting.

**Overhead Structures**  
 The overhead hazard may not be visible, particularly at night. Mark the extent of the hazard with blue cones and a white sleeve.

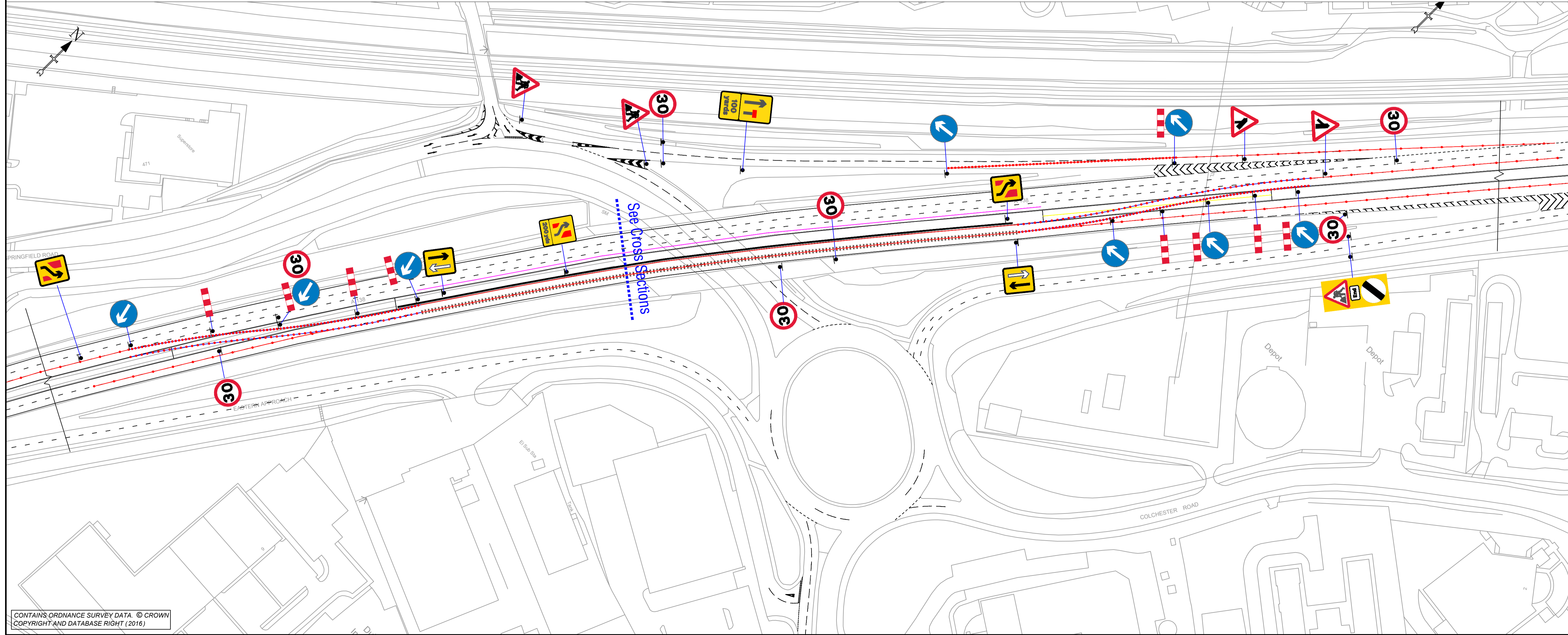
**Overhead cables**  
 The overhead hazard may not be visible, particularly at night. Mark the extent of the risk zone with blue cones and a yellow sleeve, carrying an electrical hazard symbol and message.

**Works accesses**  
 Signs face oncoming traffic, workers cannot see them and will be unaware of the works access location. Place green cones with white sleeves on either side of the works access point, inside the works, not as part of the site boundary cone line.

**Restriction on stopping in a declared zone within an area of works**  
 Vehicles stopping in any part of a deceleration zone just inside the works access or on a haul route increase the risk of work vehicle collisions. Place yellow cones with white sleeves inside the works throughout the no stopping zone as a reminder for drivers.

**KEY**

- TEMPORARY SIGN
- CONES
- N2W2 ZONEGUARD



P2				
P1				
REV	DETAILS	CHKD	APPD	DATE

DRAWN :	DRAWING STATUS
DESIGN :	WORKING DRAWING
CHKD :	PRELIMINARY DRAWING ✓
APPD :	EXTERNAL ISSUE
DATE :	AS-BUILT

SUITABILITY :

CLIENT

**Jackson**

**MARTIN TEMPLANS**

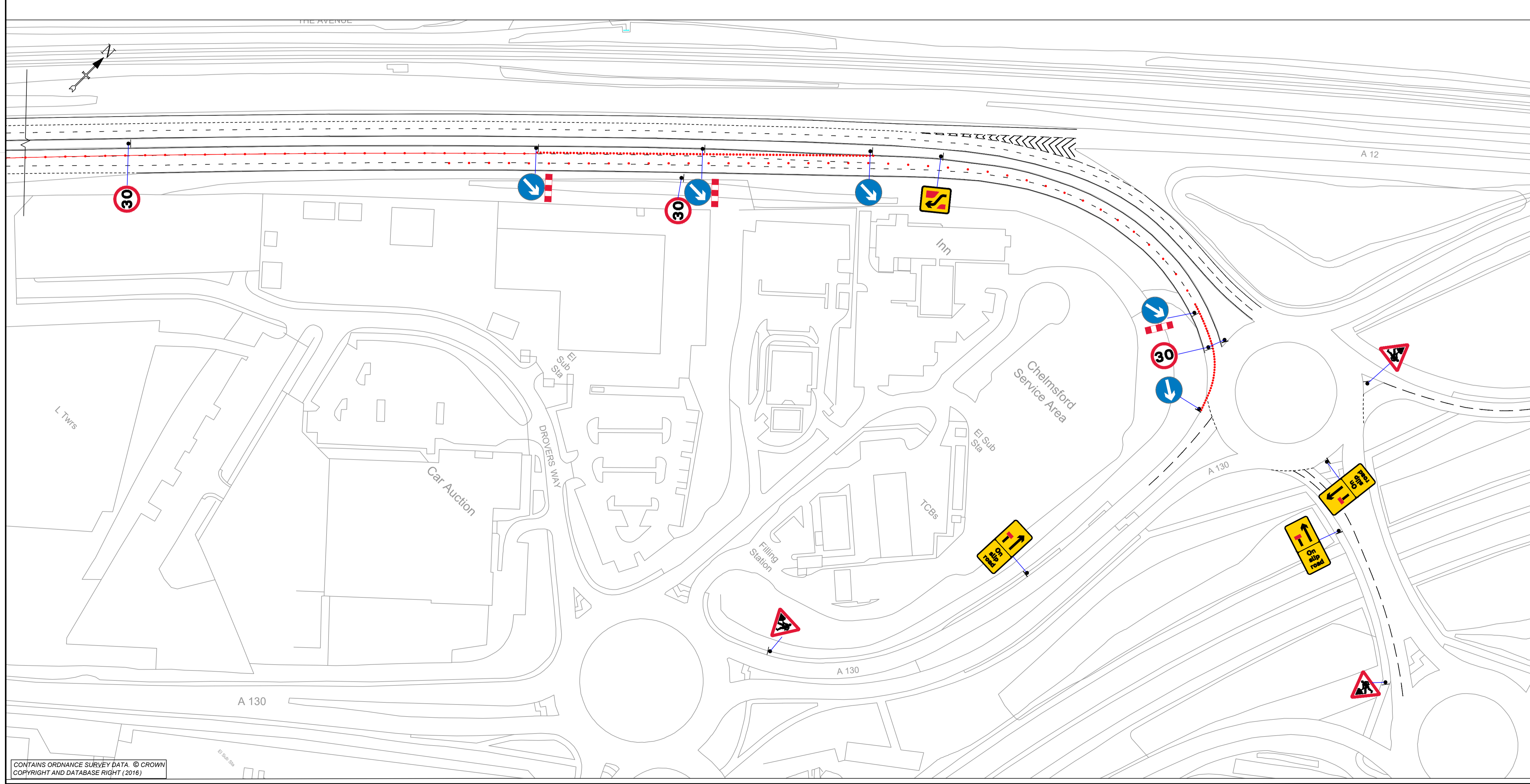
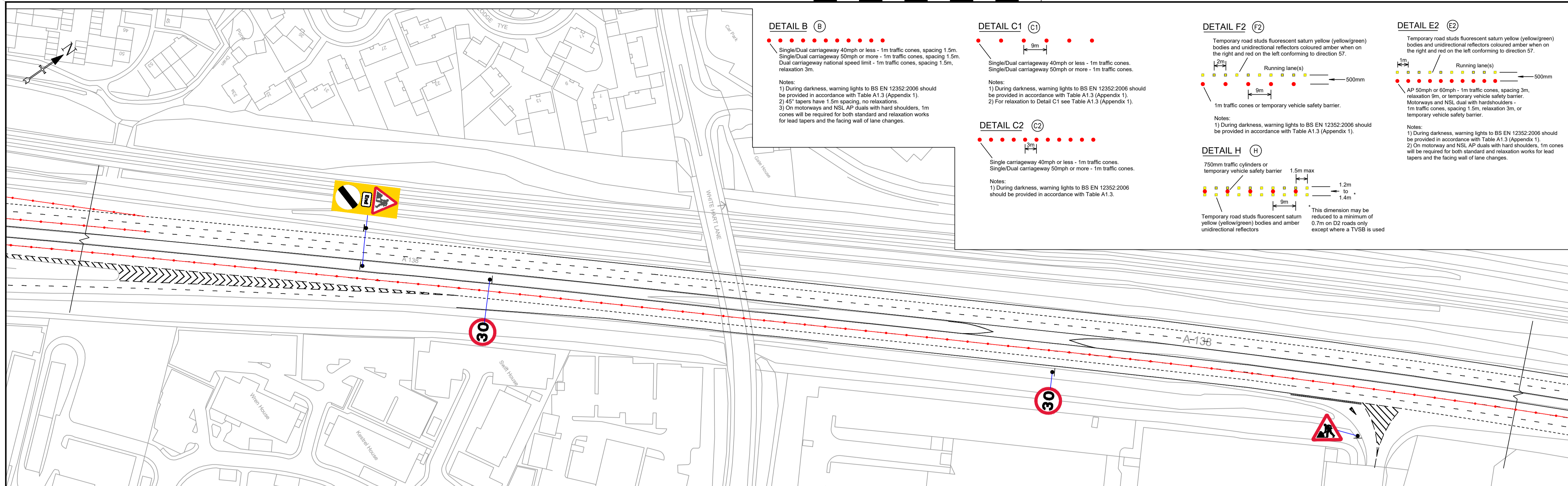
SCHEME NAME  
 Oasis Bridge: Traffic Management for Superstructure (A138)

DRAWING TITLE  
 Southbound Contraflow

Sheet 1 of 2

STATUS	SUITABILITY	ORIG DRAWING SIZE	A1	DIMENSIONS	AS STATED
02	S3	SCALE :	1:1000	COPYRIGHT	© TEMPLANS

DRAWING NUMBER	PROJECT	ORIGINATOR	VOLUME	SCHEME REFERENCE No.
018	-	TMP	-	TTM
A138	-	DR	-	WM - 0002
LOCATION	TYPE	ROLE	NUMBER	REVISION
				P 2



**DETAIL B (B)**

Single/Dual carriageway 40mph or less - 1m traffic cones, spacing 1.5m.  
 Single/Dual carriageway 50mph or more - 1m traffic cones, spacing 1.5m.  
 Dual carriageway national speed limit - 1m traffic cones, spacing 1.5m, relaxation 3m.

Notes:  
 1) During darkness, warning lights to BS EN 12352:2006 should be provided in accordance with Table A1.3 (Appendix 1).  
 2) 45° tapers have 1.5m spacing, no relaxations.  
 3) On motorways and NSL AP duals with hard shoulders, 1m cones will be required for both standard and relaxation works for lead tapers and the facing wall of lane changes.

**DETAIL C1 (C1)**

Single/Dual carriageway 40mph or less - 1m traffic cones.  
 Single/Dual carriageway 50mph or more - 1m traffic cones.

Notes:  
 1) During darkness, warning lights to BS EN 12352:2006 should be provided in accordance with Table A1.3 (Appendix 1).  
 2) For relaxation to Detail C1 see Table A1.3 (Appendix 1).

**DETAIL C2 (C2)**

Single carriageway 40mph or less - 1m traffic cones.  
 Single/Dual carriageway 50mph or more - 1m traffic cones.

Notes:  
 1) During darkness, warning lights to BS EN 12352:2006 should be provided in accordance with Table A1.3.

**DETAIL F2 (F2)**

Temporary road studs fluorescent sature yellow (yellow/green) bodies and unidirectional reflectors coloured amber when on the right and red on the left conforming to direction S7.

Notes:  
 1) During darkness, warning lights to BS EN 12352:2006 should be provided in accordance with Table A1.3 (Appendix 1).

**DETAIL E2 (E2)**

Temporary road studs fluorescent sature yellow (yellow/green) bodies and unidirectional reflectors coloured amber when on the right and red on the left conforming to direction S7.

Notes:  
 1) During darkness, warning lights to BS EN 12352:2006 should be provided in accordance with Table A1.3 (Appendix 1).  
 2) On motorway and NSL AP duals with hard shoulders, 1m cones will be required for both standard and relaxation works for lead tapers and the facing wall of lane changes.

**DETAIL H (H)**

750mm traffic cylinders or temporary vehicle safety barrier

Notes:  
 1) During darkness, warning lights to BS EN 12352:2006 should be provided in accordance with Table A1.3 (Appendix 1).

**Notes**

- All traffic management in accordance with Chapter 8, the Traffic Signs Manual 2009 and Safety at Street Works and Road Works 2013.
- Sign locations on this drawing are approximate, final sign locations to be agreed on site.

**SAFETY ZONE DIMENSIONS**

Permanent speed limit 50mph	1.2m
Sideways safety zone	1.2m
Longways safety zone	30m
(Dimensions are minimal)	

**WORKS ACCESS** **WORKS EXIT**

Works access location to be agreed on site at initial site meeting.

- Overhead Structures** The overhead hazard may not be visible, particularly at night. Mark the extent of the hazard with blue cones and a white sleeve
- Overhead cables** The overhead hazard may not be visible, particularly at night. Mark the extent of the risk zone with blue cones and a yellow sleeve, carrying an electrical hazard symbol and message
- Works accesses** Signs face oncoming traffic, workers cannot see them and will be unaware of the works access location. Place green cones with white sleeves on either side of the works access point, inside the works, not as part of the site boundary cone line
- Restriction on stopping in a declared zone within an area of works** Vehicles stopping in any part of a deceleration zone just inside the works access or on a haul route increase the risk of work vehicle collisions. Place yellow cones with white sleeves inside the works throughout the no stopping zone as a reminder for drivers.

**KEY**

- TEMPORARY SIGN
- CONES
- N2W2 ZONEGUARD

P2				
P1				
REV	DETAILS	CHKD	APPD	DATE

DRAWN :	DRAWING STATUS
DESIGN :	WORKING DRAWING
CHKD :	PRELIMINARY DRAWING ✓
APPD :	EXTERNAL ISSUE
DATE :	AS-BUILT
SUITABILITY :	

CLIENT

SCHEME NAME  
**Oasis Bridge: Traffic Management for Superstructure (A138)**

DRAWING TITLE  
**Southbound Contraflow**

Sheet 2 of 2

STATUS	SUITABILITY	ORIG DRAWING SIZE	A1	DIMENSIONS	AS STATED
02	S3	SCALE	1:1000	COPYRIGHT	TMPLANS
DRAWING NUMBER	PROJECT	VOLUME	SCHEME REFERENCE No.		
A138	018	TTM	610		
LOCATION	TYPE	ROLE	NUMBER	REVISION	
			0002	P 2	