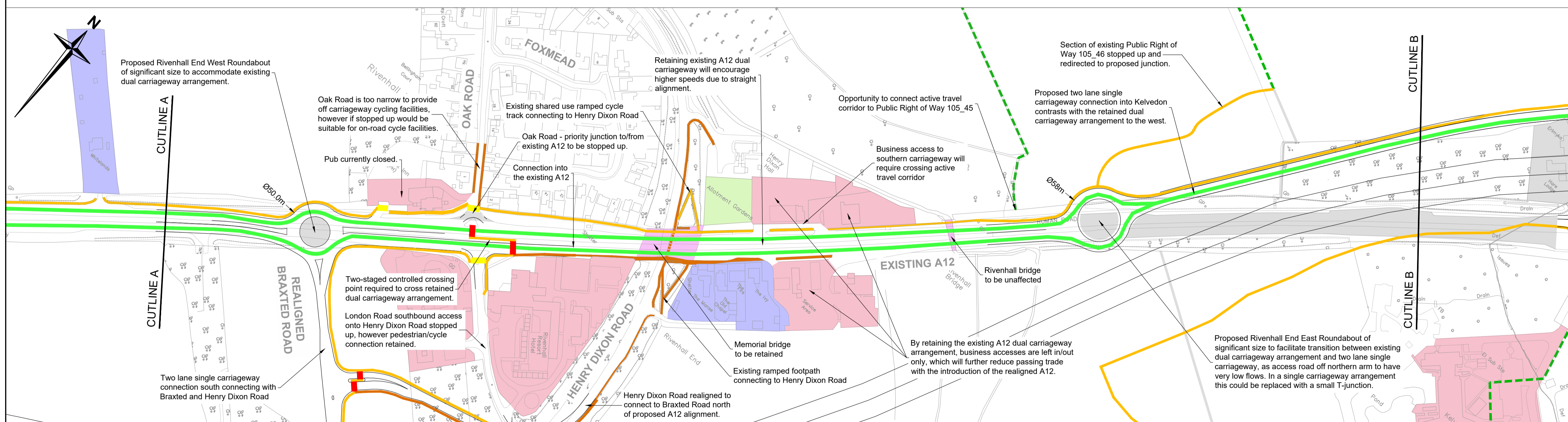


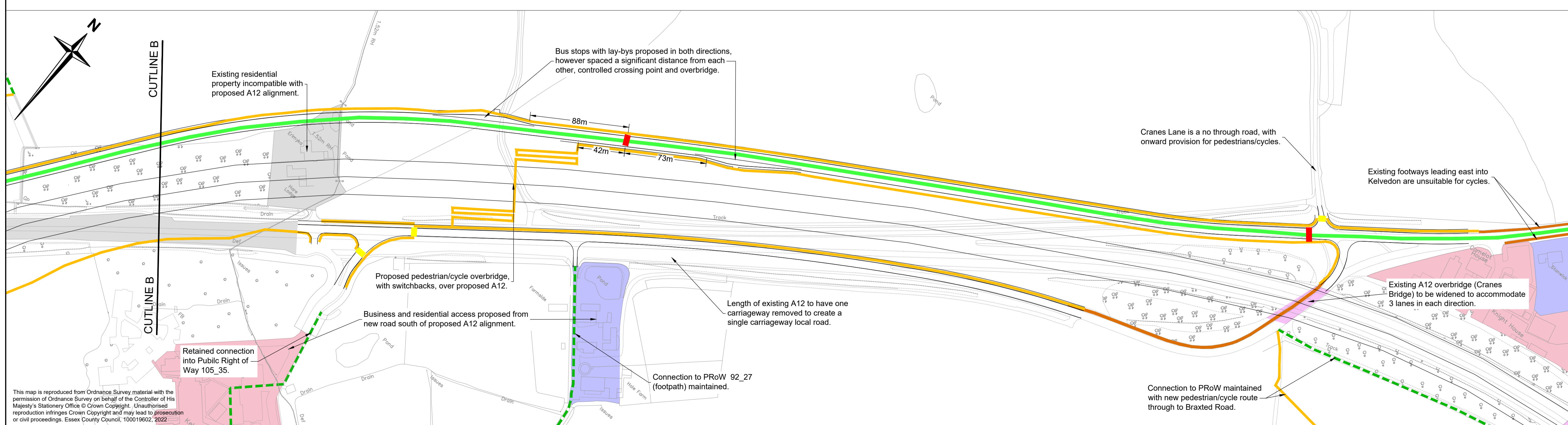
- Notes**
- Do not scale.
  - National Highways proposed alignment has been sourced and displayed for illustrative purposes only. For further details please see official National Highways' authored documentation.
  - This drawing has been developed to demonstrate the general features of the National Highway's proposals and surrounding area. It does not represent a detailed review of their alignment proposals.
  - Only residential properties and businesses that access directly onto the existing A12 have been highlighted.
- Key**
- National Highways proposed kerb line/edge of carriageway/earthworks associated with A12 scheme.
  - Private dwelling
  - Business
  - Allotments
  - Existing/proposed shared use pedestrian/cycle facility
  - Existing/proposed pedestrian only facility
  - Existing Public Right of Way
  - Existing/proposed controlled crossing point
  - Existing/proposed uncontrolled crossing point
  - Assumed routing of existing bus services
  - Existing structure to be retained
  - Existing feature to be stopped up or removed



Rev.	Date	Description of revision	Drawn	Checked	Reviewed	Approved

DRAWING STATUS

**FOR INFORMATION**



Essex Highways, Seax House, Victoria Road South, Chelmsford, CM1 1QH.  
Tel: 0345 6037631 © Essex County Council

SCHEME TITLE

**A12 DCO DETRUNKING OPTIONS**

DRAWING TITLE

**RIVENHALL NATIONAL HIGHWAYS PROPOSALS**

DESIGNED	DRAWN	CHECKED	REVIEWED	APPROVED
BA	BA/OS	IJ	MS	KC
DATE	DATE	DATE	DATE	DATE
JAN 23	JAN 23	JAN 23	JAN 23	JAN 23

DRAWING UNITS U.N.O. DIMENSIONS IN MILLIMETRES LEVELS IN METRES

SCALE AT A1 (841X594mm) 1:2000

DRAWING NO. **B3553RB1-01-00-001** REV. -



This map is reproduced from Ordnance Survey material with the permission of Ordnance Survey on behalf of the Controller of His Majesty's Stationery Office © Crown Copyright. Unauthorised reproduction infringes Crown Copyright and may lead to prosecution or civil proceedings. Essex County Council, 100019002, 2022