

# HIGHWAYS HIGHLIGHTS

HELPFUL  
TIPS AND  
INFORMATION  
FOR LOCAL  
COUNCILLORS

## OVER 10,000 NEW LED STREETLIGHTS ALREADY INSTALLED

We are moving at the speed of light to upgrade the remaining 82,000 old-style streetlights, mainly in residential roads, with LED ('light-emitting diode') streetlight technology.

This three-year rollout began in May, starting with Chelmsford and Basildon, with LEDs being installed district by district until completion in 2024. On average, our crews are now upgrading 1000 lights a week and by the end of September 10,000 streetlights had already been replaced.

Councillor Lee Scott, Essex County Council's Cabinet Member for Highways Maintenance and Sustainable Transport, said: "I am thrilled with the progress that has been made with the LED rollout. I would like to thank the crews for all their hard work that has meant we are currently

ahead of schedule for the installation. LED lights bring many benefits for both residents and the environment as they save on average around 60% energy usage and thousands of tons of carbon emissions involved in generating electricity.

"The replacement will also mean a better service and more effective use of taxpayer's money, as after 25 years it is estimated the net savings for ECC will be around £39 million"

**More information about our LED replacement programme can be found [here](#)**



**WATCH  
THE  
VIDEO**



## COMMENT COUNCILLOR LEE SCOTT

**CABINET MEMBER FOR  
HIGHWAYS MAINTENANCE  
AND SUSTAINABLE  
TRANSPORT**

Dear colleagues as we enter the Autumn/Winter season, I want to thank all involved with the preparation for whatever the weather may bring. I have visited our Springfield depot and seen for myself the work being done to prepare for another gritting season.

We are also out every day jetting to help against flooding. In recent weeks we have seen a large amount of rainfall, perhaps more than we would have expected and our response across the whole of Essex has tried to help alleviate any issues our residents have had.

I thank all of our great teams out on the network for the work they are doing and the work that lies ahead of them. I will do all I can to help you in these ongoing and difficult tasks.

# READY, SET, STANDBY! WINTER MAINTENANCE HAS BEGUN AT ESSEX HIGHWAYS

**It's that time again...we are geared up and ready to deliver this year's winter gritting programme on Essex roads with our salt-barns full and our drivers on stand-by since 18 October.**

You may have seen the gritter vehicles out and about at the beginning of October even though it wasn't cold enough, this was just to allow our drivers to refresh their knowledge of all the routes we grit. Don't forget that National Highways, not Essex Highways, grit the A12, A120, M11 and M25 in Essex.

Councillor Lee Scott, Cabinet Member for Highways Maintenance and Sustainable Transport at Essex County Council, says; "Throughout our winter maintenance period, our gritter crews are on standby. Long-range weather forecasts cannot always tell us with any reliability what sort of winter weather we may get.

"Last winter in Essex we carried out 90 gritting actions, 42 more than the year before, and we are aware the county could face similar episodes this winter, so our message is: We are prepared.

"I would like to take this opportunity to thank our gritter team for the vital work they do to keep our road network moving safely throughout the winter months. The gritter drivers are the same operatives who repair potholes, jet drains etc,

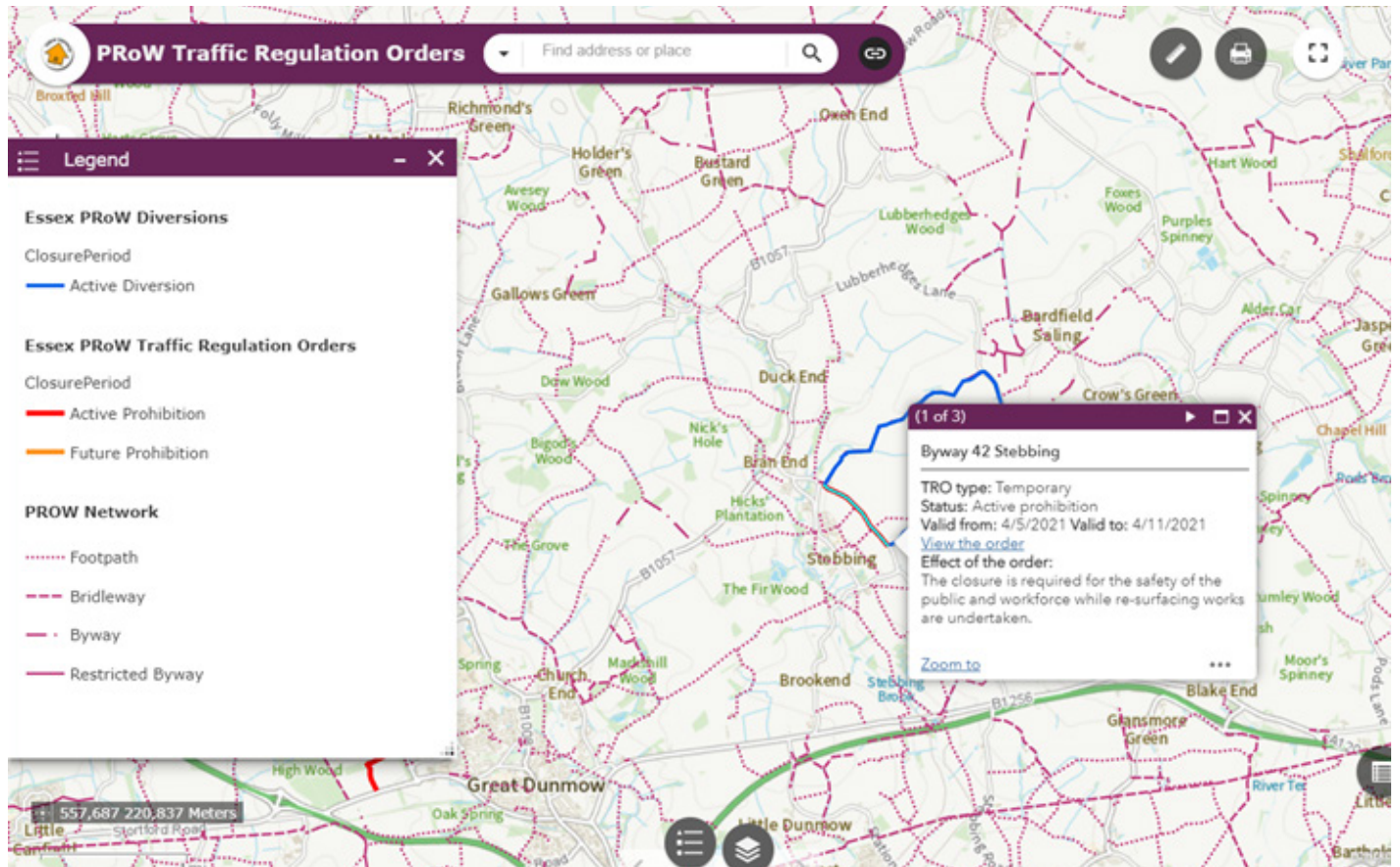
so they are very busy at this time of year. The UK is currently suffering from a shortage of HGV drivers and many Councils are struggling to retain gritter drivers. We are working with our drivers and currently have sufficient numbers, but this is changing on a daily basis, so we will keep you informed."

If you want to refresh your own memory of roads we grit, please have a look at our gritting routes map online.

You can also find out much more on our other extensive winter travel pages - and if you would like to get daily alerts about whether we are gritting or not, then please follow our Essex Highways twitter feed

Want to find out more? Take a look at our 2021 Winter Service video:





## IMPROVED ESSEX WALKING MAP FOR PRow USERS

Essex Highways has for some years published an online map of its Public Rights of Way, for PRow users to consult when planning an excursion. Using an ESRI-based web app, we have now introduced a number of improvements, enabling map users to better interact with it and its data. Improvements include:

- The map now shows current temporary restrictions, long term seasonal restrictions and, where appropriate, any diversions to PRow routes
- We have enabled the use of geolocation, so that users who are out and about on our highway and public right of way network will be able to follow the routes and check if there is a closure or restriction along their planned route
- Users can now print a copy of the map with its associated legend/key information

And in a change that could be useful for walking groups so they know where to meet up, map locations can be shared by adding a 'pin' to the map then sharing a unique link to that location.

These are just some of the tools available on the new improved map - **find out more and try out the map yourself.**



# DRIVERS: WE WANT YOUR VIEWS ON CYCLING



The Safer Essex Roads Partnership are working with Anglia Ruskin University on a research project into cycle safety and how drivers interact with cyclists on the road.

The current study phase is looking for drivers who would like to take part in an online survey, where drivers are asked for their opinions of video clips showing motor vehicles overtaking cyclists. The survey is open to all UK drivers, including those who also cycle themselves, as well as those who do not. Please encourage drivers that you know to take part.

People who take part will be asked questions about how they use the road and how they respond to certain types of situation on the road. It will also include a series of video clips depicting interactions between drivers and cyclists. Participants will be asked some questions about each clip to gauge their opinion of what they saw.

**Accessible here, the survey is fully anonymous and takes about 20-30 minutes to complete.**

This study is being carried out under the supervision of Anglia Ruskin University. **Further information can be obtained here.**



# SPIN

## E-SCOOTER TRIAL EXTENDED TO MARCH 2022



Spin, the micromobility unit of Ford Motor Company in charge of running the ECC e-scooter trial has announced that the trial will be extended in Basildon, Chelmsford, Colchester, Brentwood and Braintree until March 2022. The Clacton trial finished at the end of October.

Spin first launched the public hire scheme in Essex in December 2020 and since then there have been more than 450,000 e-scooter rides. Chelmsford has seen the most (146,000), followed by Colchester (143,000) and Basildon (124,000).

The extension also includes the Spin Access and Spin Everyday Heroes schemes to support NHS workers and low-income riders with free and subsidised rides in Essex, to make essential journeys affordable. Since launch, the programme has had 947 NHS workers signing up while nearly 100 riders are taking advantage of Spin Access.

Rider data reveals Spin e-scooters are most often used for short journeys, on average 3 km in distance and 23 minutes in length, with 82% of riders stating they have used a Spin e-scooter to replace a solo drive car journey at least once already.



## THESE FEET ARE MADE FOR WALKING

Following the launch of the Essex County Council Walking Strategy earlier in the summer, the Safer, Greener, Healthier team have been working with the GoJauntly app to encourage us all to walk more, not just for leisure but for shorter journeys such as to work or to the shops.



One Essex resident says that walking has made her a new woman - watch Wilma talking about the benefits of walking [here](#).





# CHELMSFORD NORTH EAST BYPASS TAKES A BIG STEP FORWARD

A planning application has now been submitted for Chelmsford North East Bypass as part of a £250m investment, which also includes a new railway station at Beaulieu.

The bypass scheme, which will support the development of homes and businesses in Chelmsford, would see 4.6km of new road and a 1.2km dual carriageway along the existing A131 in North East Chelmsford, providing a vital link between the A120 and A12.

The new route would help to reduce congestion in Chelmsford, bypassing residential areas and providing a strategic link between the city, Braintree, London Stansted Airport and the wider east and south east of England. The planning application provides further opportunity for the public to comment on the project ahead of a planning decision, which is anticipated early next year.

For further information, please review the [planning application](#) or [visit our website](#)

## ROUTINE REPAIRS DURING SEPTEMBER 2021

In September, we continued to clear out drains on local roads. Road drains are cleansed on an annual cycle, district by district. Streetlights-fixed totals don't include the work being carried out in the LED upgrade programme and are listed here as an addition.

DISTRICT	COUNTY ROUTES	LOCAL ROADS	PAVEMENT DEFECTS FIXED	DRAINS CLEARED	STREETLIGHTS FIXED
BASILDON	37	39	31	1754	495
BRAINTREE	48	24	16	1916	288
BRENTWOOD	8	3	9	0	275
CASTLE POINT	11	16	16	0	425
CHELMSFORD	11	25	20	82	133
COLCHESTER	15	43	17	40	274
EPPING FOREST	41	17	33	2	204
HARLOW	14	24	36	722	255
MALDON	3	6	7	251	54
ROCHFORD	9	8	108	0	192
TENDRING	16	32	14	904	207
UTTLESFORD	23	6	9	1509	76
<b>TOTALS</b>	<b>236</b>	<b>243</b>	<b>316</b>	<b>7180</b>	<b>2878</b>